

DC RELAY SETTINGS

SETUP PROCEDURE FOR 935A-1CKO-000G CONTROLER

- 1.GO TO OPERATIONS MENU BY PRESSING BOTH **UP & DN** ARROW KEYS SIMULTANEOUSLY FOR 3 SECONDS
- 2.**ARROW UP 1** TO **CNFG**
3. HOLD SET TO DISPLAY **NO**, **ARROW UP 1** TO **YES** – RELEASE
- 4.**IN** SHOULD APPEAR – **ARROW UP 1** - **TAG** APPEARS - RELEASE
- 5.HOLD SET & **ARROW UP** UNTIL SCREEN IS BLANK - RELEASE
- 6.HOLD BOTH ARROW KEYS FOR 3 SECONDS FOR MAIN SCREEN TEMP. DISPLAY - RELEASE
- 7.GO BACK TO OPERATION MENU – HOLD BOTH **UP & DN** ARROW KEYS SIMULTANEOUSLY FOR 3 SECONDS
- 8.**ARROW DOWN 1** TO **PID** - RELEASE
- 9.HOLD SET TO DISPLAY **NO** & **ARROW UP 1** TO **YES** - RELEASE
- 10.**PB H** SHOULD BE DISPLAYED
- 11.PUSH SET & **ARROW DN** TO **0** - RELEASE
- 12.**ARROW DN 1** TO **HYSH** – PUSH SET TO DISPLAY **3** – **OK** - RELEASE
- 13.**ARROW DN 1** TO **CAL** – PUSH SET & **ARROW DN TO -21** - RELEASE
- 14.PUSH BOTH **UP & DN** ARROW SIMULTANEOUSLY TO RETURN TO MENU

START HERE FOR MERCURY TO DC CHANGE ARROW TO OE1 STEP 22

- 15.GO BACK TO MENU - **UP & DN** ARROW SIMULTANEOUSLY FOR 3 SECONDS
 - 16.**ARROW UP 1** TO **CNFG** - RELEASE
 - 17.HOLD SET TO DISPLAY **NO** & **ARROW UP 1** TO **YES** - RELEASE
 - 18.**IN** SHOULD BE DISPLAYED – PUSH SET TO SEE **j** – **OK** – RELEASE
 - 19.**ARROW DN 1** TO SEE **C-F** DISPLAYED. PUSH SET TO SEE **F** – **OK** - RELEASE
 - 20.**ARROW DN 1** TO **RL** - PUSH SET TO SEE **32** - **OK** – RELEASE
 - 21.**ARROW DN 1** TO **RH** – PUSH SET & **ARROW DN TO 250*** - RELEASE
 - 22.**ARROW DN 1** TO **OE 1** – PUSH SET & **ARROW DN 1** TO DISPLAY **HEAT** & RELEASE
 - 23.**ARROW DN 1** TO **OE2** – PUSH SET TO SEE **NONE** – **OK** – RELEASE
 - 24.**ARROW DN 1** TO **DISP** – PUSH SET TO SEE **AC** – **OK** – RELEASE
 - 25.**ARROW DN 1** TO **FAIL** – PUSH SET TO SEE **BPLS** – **OK** – RELEASE
 - 26.**ARROW DN 1** TO **SLOC** – PUSH SET TO SEE **NO** - **OK** – RELEASE
 - 27.**ARROW DN 1** TO **TAG** – PUSH SET & **ARROW DN 1** TO **PCOA** – RELEASE
 - 28.PUSH BOTH **UP & DN** ARROW SIMULTANEOUSLY TO RETURN TO MENU
- CABINET SHOULD START HEATING**

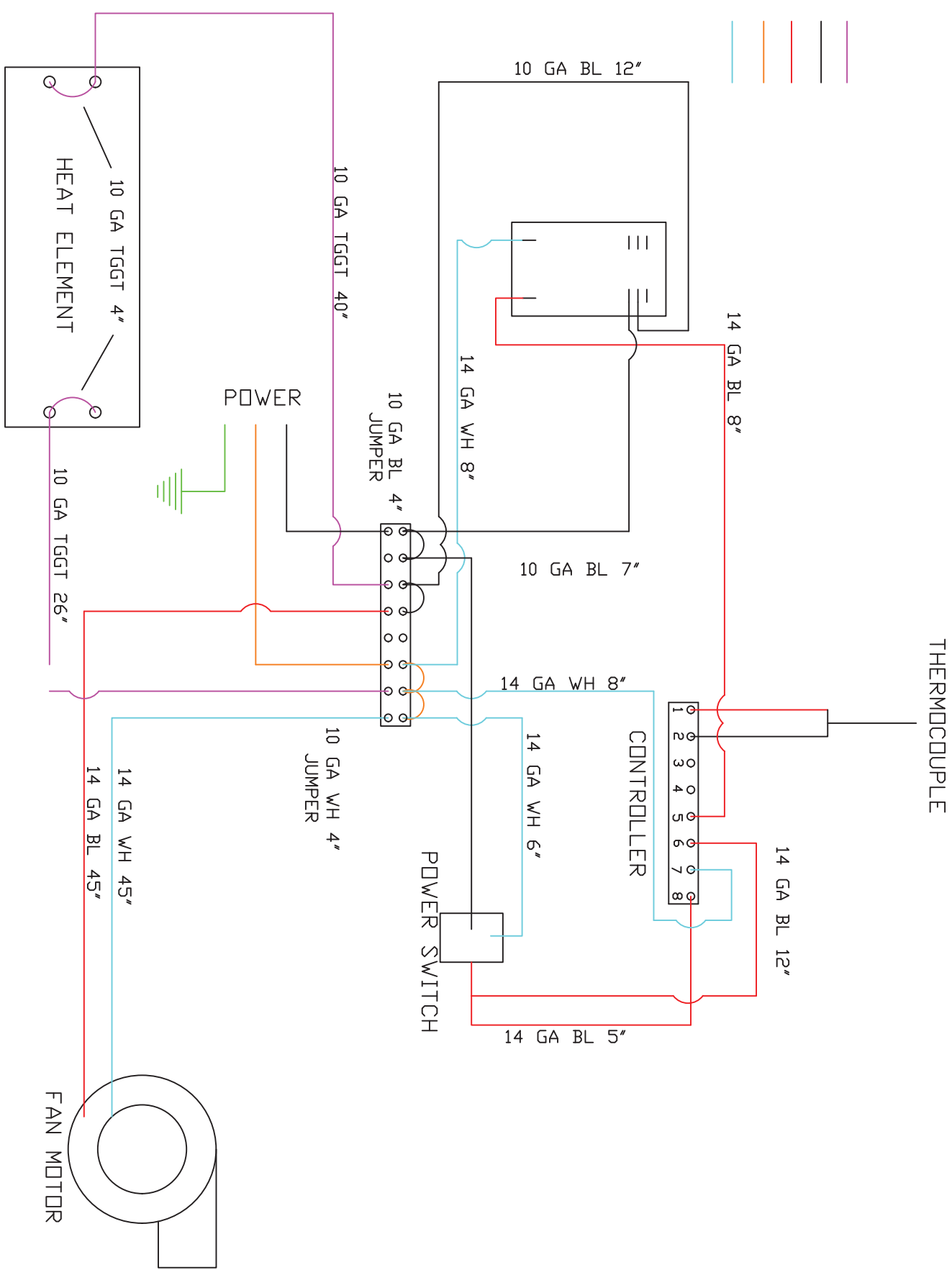
PUSH SET & **ARROW UP** TO SET OPERATING TEMP AT **240*** & RELEASE

CHANGING PROGRAM AFTER PROGARMING

1. ENTER SETUP BY PRESSING **UP & DN** SIMULTANEOUSLY FOR 3 SECONDS
- 2.**CNFG** APPEARS – HOLD SET & **ARROW UP 1** TO **YES** – RELEASE
- 3.**TAG** SHOWS – HOLD SET & **ARROW UP 1** TO **BLANK** – RELEASE
- 4.EXIT SETUP – HOLD BOTH **ARROW UP & DN** FOR 3 SECONDS
- 5.RE-ENTER SETUP MENU & START AT LINE 3 TO CHECK / CHANGE SETTINGS

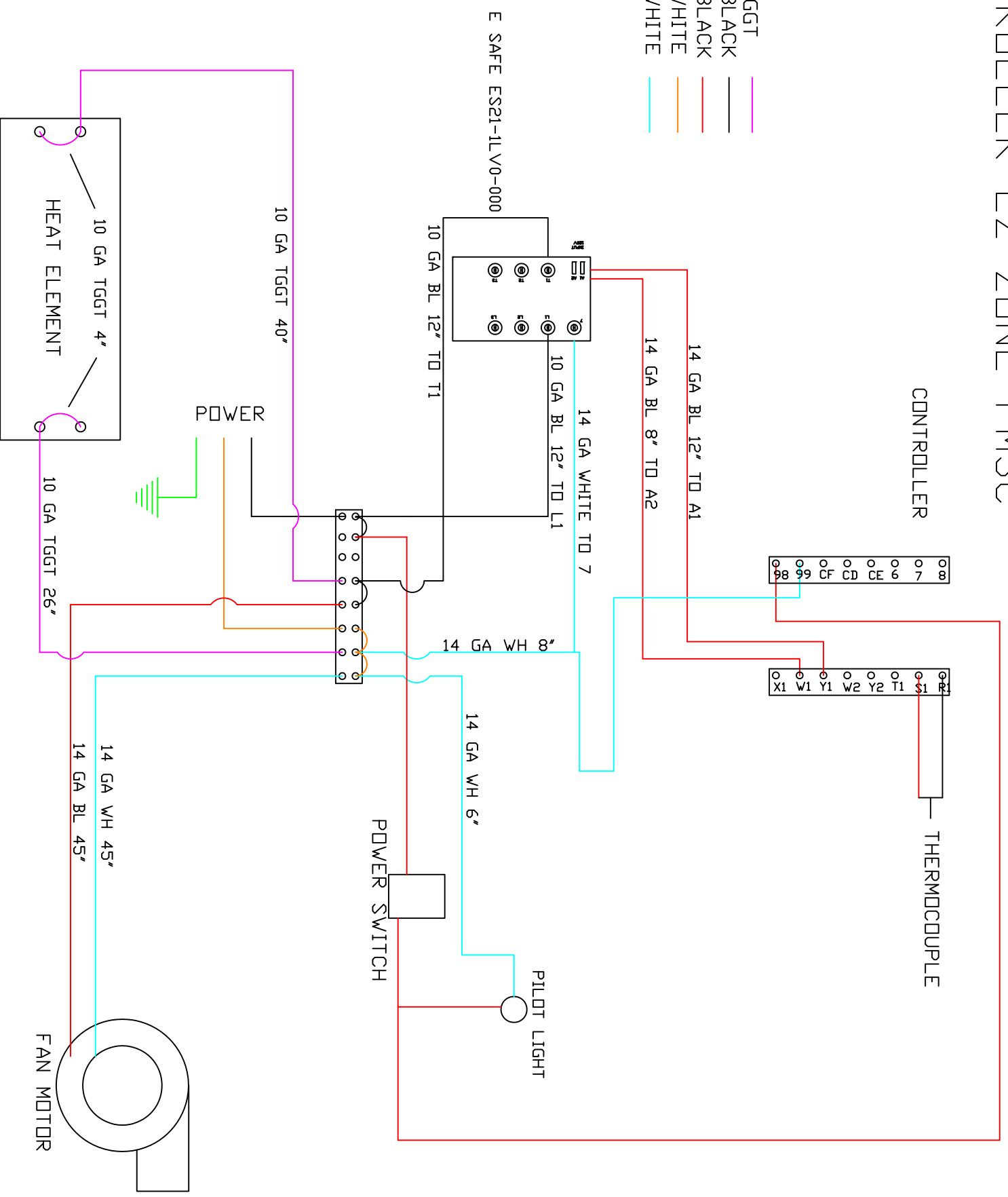
H5 WIRING DIAGRAM 120V RELAY PM3C CONTROL TO SCHNEIDER 120V CONTROL VOLTAGE

- 10 GA, TGGT
- 10 GA BLACK
- 14 GA BLACK
- 10 GA WHITE
- 14 GA WHITE



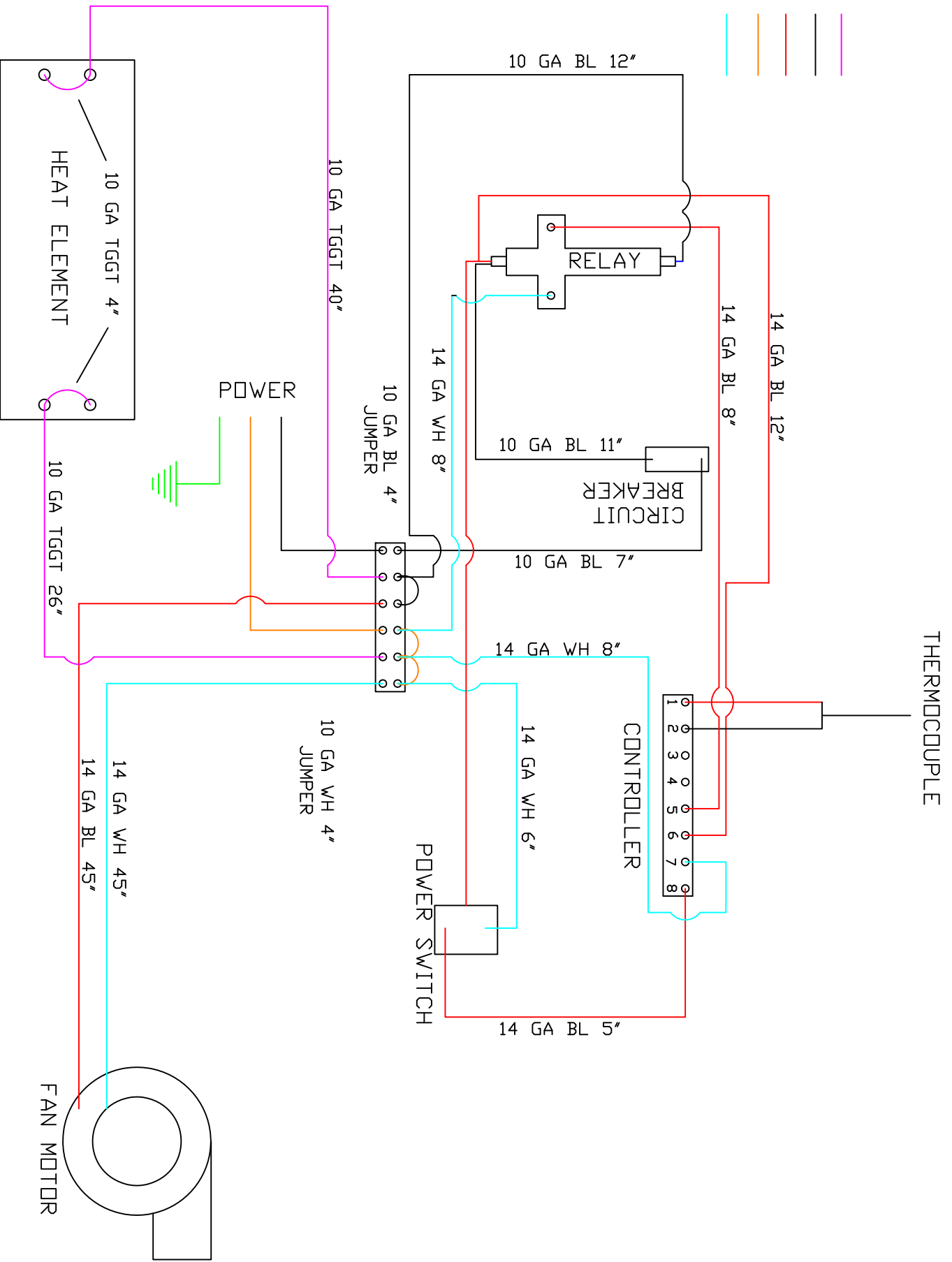
H5 WIRING DIAGRAM FOR E SAFE RELAY CONTROLLER EZ ZONE PM3C

- 10 GA.TGGT —
- 10 GA BLACK —
- 14 GA BLACK —
- 10 GA WHITE —
- 14 GA WHITE —



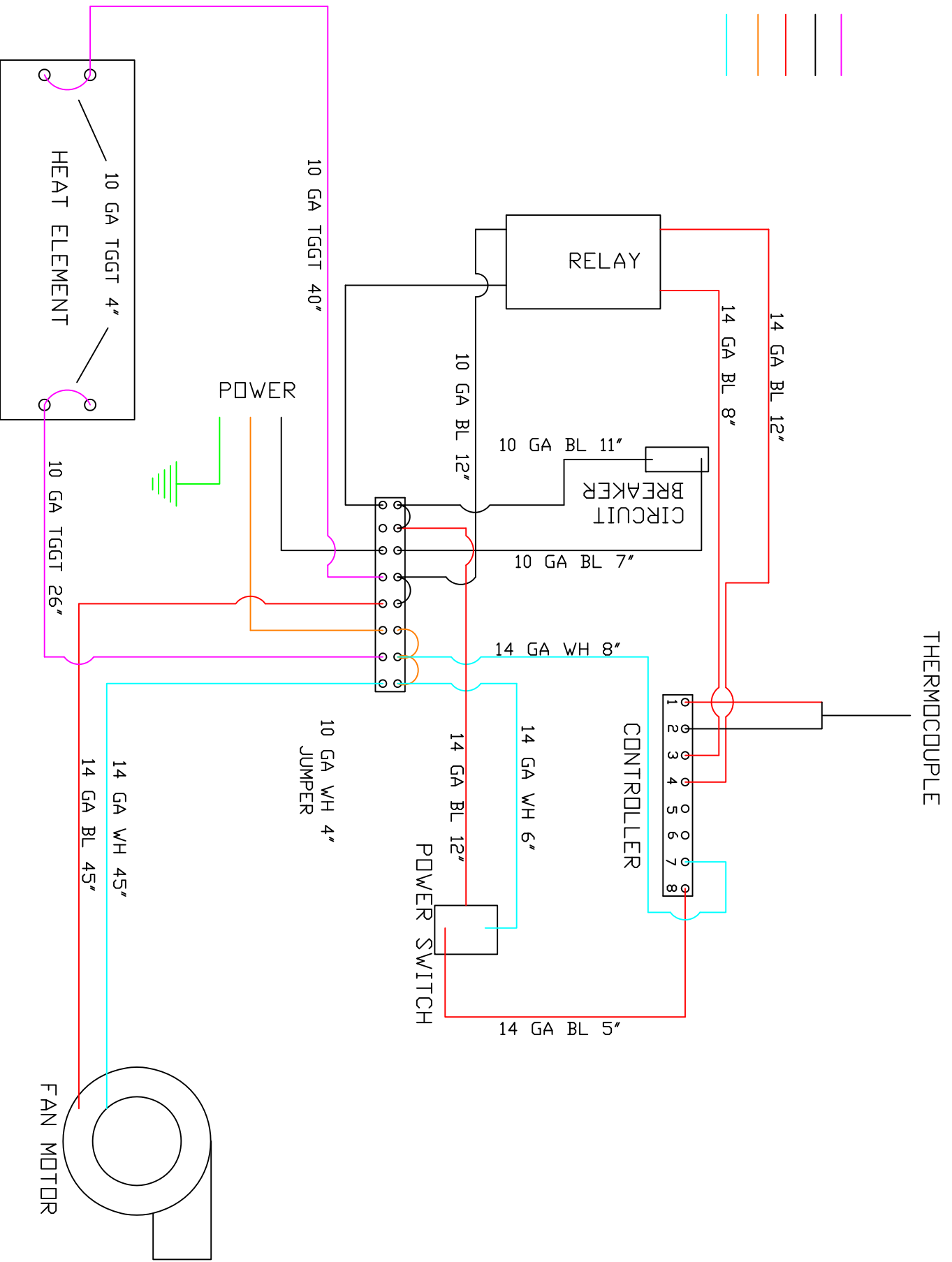
H5 WIRING DIAGRAM MERCURY RELAY

- 10 GA, TGGT
- 10 GA BLACK
- 14 GA BLACK
- 10 GA WHITE
- 14 GA WHITE

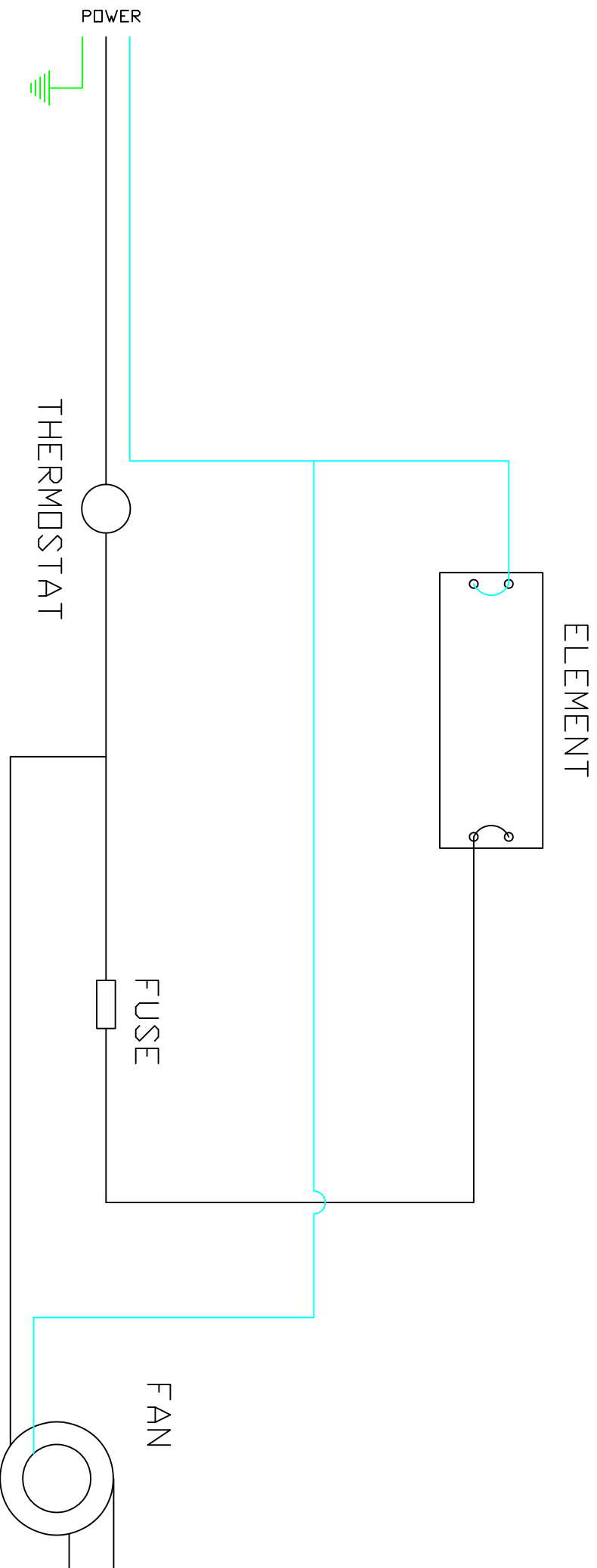


H5 WIRING DIAGRAM OLD CONTROL

- 10 GA.TGGT
- 10 GA BLACK
- 14 GA BLACK
- 10 GA WHITE
- 14 GA WHITE

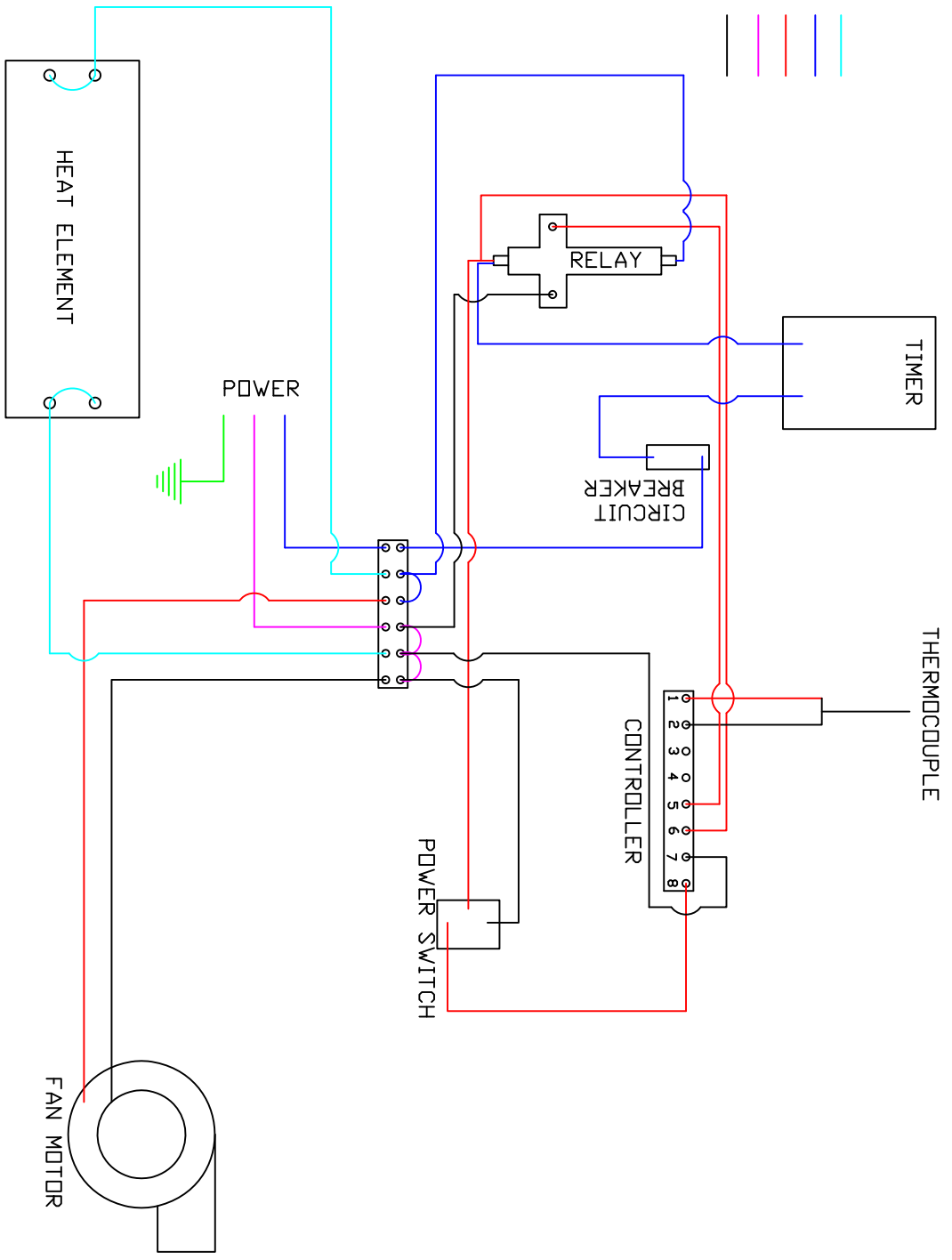


HS WIRING DIAGRAM FOR THERMOSTAT STYLE CABINET



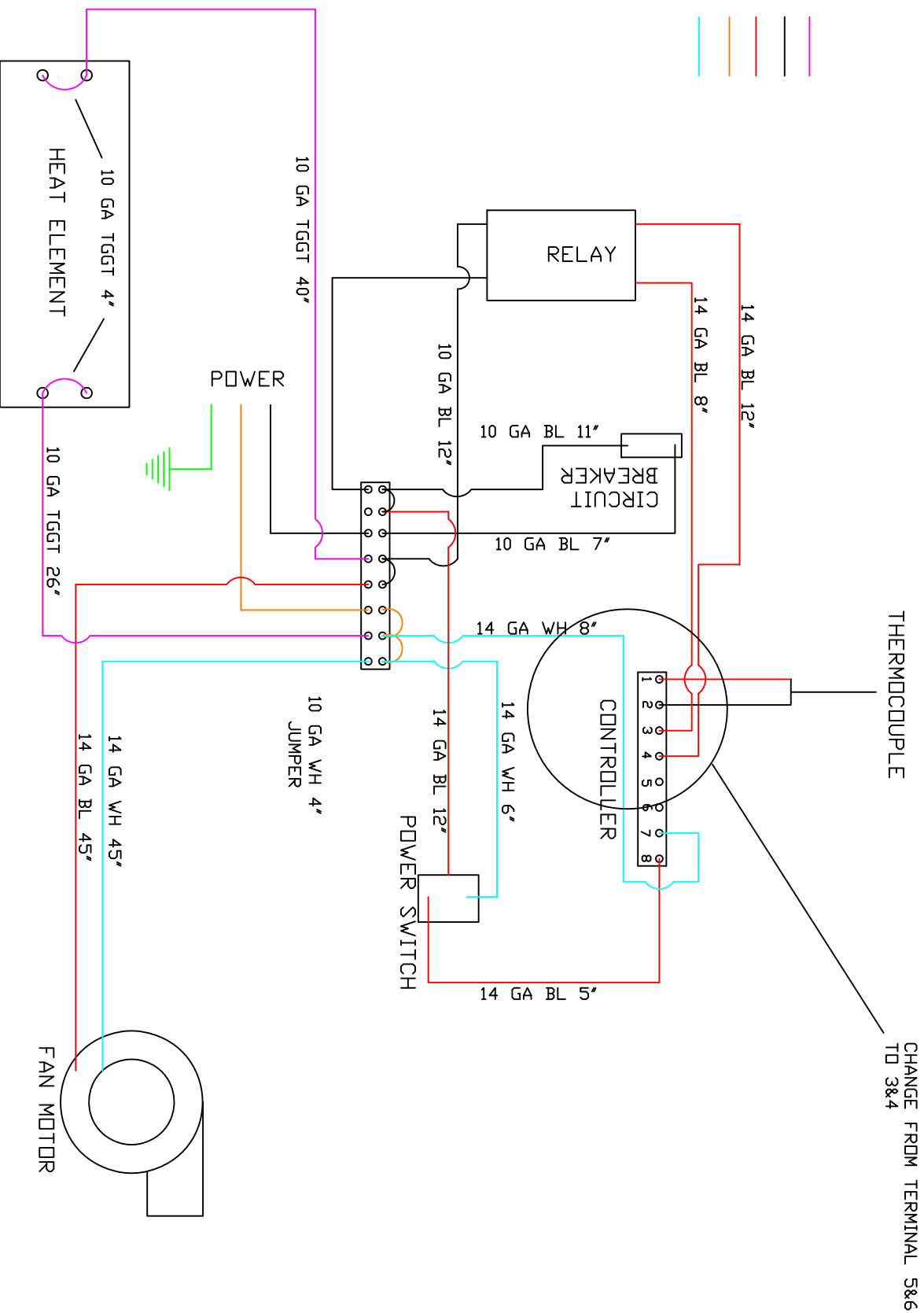
H5 WIRING DIAGRAM TIMER OPTION

- 10 GA TGGT
- 10 GA BLACK
- 14 GA BLACK
- 10 GA WHITE
- 14 GA WHITE



H5 WIRING DIAGRAM TO CHANGE FROM MERCURY RELAY TO DC RELAY

- 10 GA.TGGT
- 10 GA BLACK
- 14 GA BLACK
- 10 GA WHITE
- 14 GA WHITE

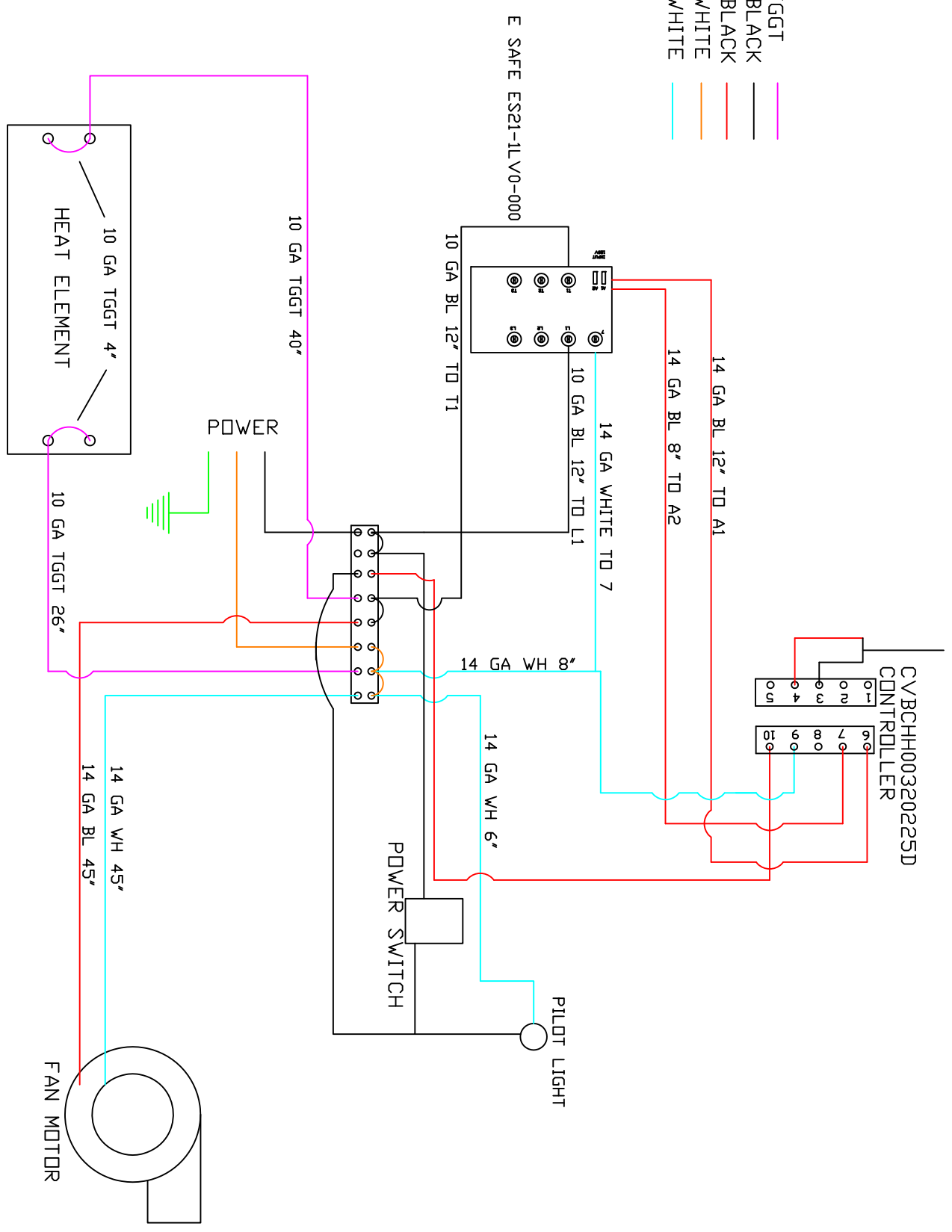


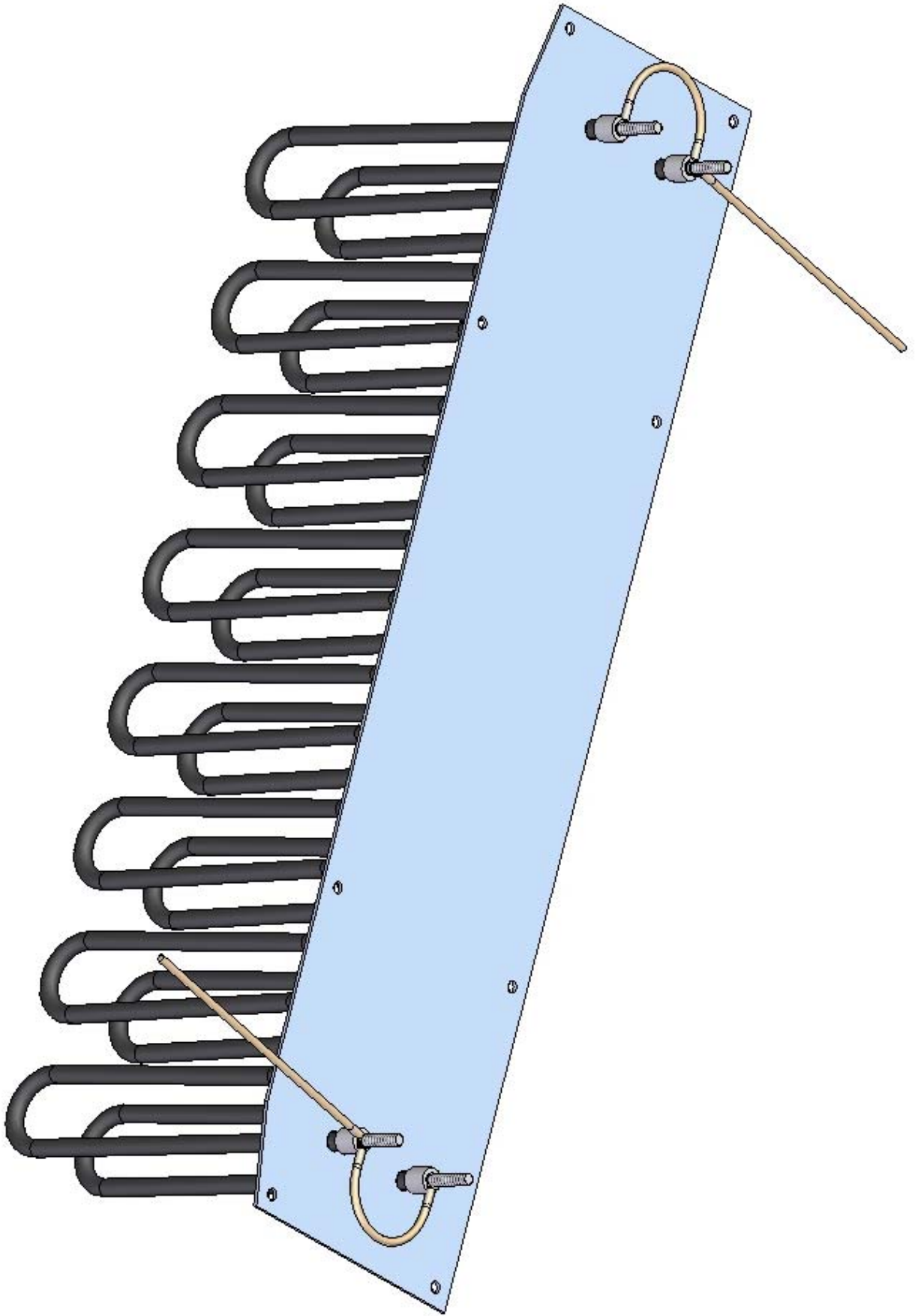
H5 WIRING DIAGRAM FOR E SAFE RELAY CONTROLLER CVBCHH00320225D

THERMOCOUPLE

CVBCHH00320225D
CONTROLLER

- 10 GA. TGGT
- 10 GA BLACK
- 14 GA BLACK
- 10 GA WHITE
- 14 GA WHITE





PRESS UP AND DOWN ARROW KEYS		
ARROW TO F01 PRESS SET BUTTON		
F01 - SET TO 231 PRESS SET		(C TO F)
ARROW UP OR DOWN TO 1 PRESS SET		
WAIT FOR SCREEN TO GO BACK TO NORMAL		
PRESS UP AND DOWN ARROW KEYS		
ARROW TO F01 PRESS SET		
F01 - SET TO 123 PRESS SET		
ARROW TO F07 PRESS SET		
SET F07 TO 1	PRESS SET	heat out put
SET F06 TO 5	PRESS SET	differential
SET F05 TO 225	PRESS SET	high limit
SET F04 TO 0	PRESS SET	low set point
SET F02 TO 225	PRESS SET	set point
TO ADJUST OFFSET		
PRESS UP AND DOWN ARROW KEYS		
SET F01 TO 123		access program
ARROW TO F03		Offset
F03 TO THE DESIRED OFFSET AND PRESS SET		