



SPEC SHEET

Speedee Serv® Speedline Heated Display



Shown on D5430 Merchandising cabinet with Door Slide accessory

Specifications

G.A. Systems Heated Display is constructed of 1-1/2" square 18 gauge 304 stainless steel tubing. Tubing is heli-arc welded to form two symmetrical end units. End units are joined together with 1" square and 1" round 18 gauge 304 stainless steel tubing forming display frame structure.

Top merchandising hood is fabricated of 18 gauge stainless steel #4 finish. Hood is of seamless construction to maintain high sanitary precautions. Entire hood is heli-arc welded with all welds being ground and polished. Hood has a die formed 90° angle on two sides to hold wire baskets securely in place.

Display unit consists of two removable ends and four removable doors. End panels are constructed of 1/4" thick clear acrylic material. Each door has two wheel type rollers on bottom edge. Each door has one handle securely bolted to front face. Doors slide smoothly on an upper and lower track. Tracks are constructed of extruded aluminum material. Doors are removable without the use of tools for easy cleaning.

Each Heated Display unit is equipped with an upper and lower heating system. The two heat systems are infrared strip heaters located high into the hood area to protect against injury. Each warmer is equipped with an adjustable control to regulate the desired temperature.

120 Volt/60Hz/Single Phase 20 Amp circuit required. Display is equipped with a 6' cord and NEMA 5-20p plug. Requires a NEMA 5-20R receptacle.

Dimensions

ITEM	MODEL	WIDTH	DEPTH	HEIGHT
C0316	HD48	48"	29"	28-1/4"
C0171	HD54	54"	29"	28-1/4"
C0112	HD5436	54"	35"	28-1/4"

PROJECT: _____

ITEM #: _____

MODEL: _____

Standard Features

- Four acrylic sliding doors with handles
- Two heat strip

Accessories

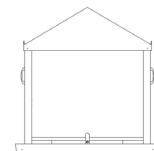
- 2" Deep Stainless Steel Wire Basket
- 2" Deep Wire Basket
- 4" Deep Stainless Steel Wire Basket
- 4" Deep Wire Basket



TOP VIEW



FRONT VIEW



END VIEW



Intertek



Intertek

4003279

Conforms to UL Std. 197 & NSF Std. 4
Commercial Cooking Appliance

Rev 09/2021